

LOWES SHOPPING CENTER - M.U.P.D.

5529-000

53

SITUATE IN THE SOUTHWEST ONE-QUARTER OF SECTION 19, TOWNSHIP 47 SOUTH, RANGE 42 EAST, PALM BEACH COUNTY, FLORIDA. BEING A REPLAT OF TRACT 98 AND A PORTION OF TRACT 99, BLOCK 78, PALM BEACH FARMS COMPANY PLAT NO. 3, AS RECORDED IN PLAT BOOK 2, PAGES 45 THROUGH 54 OF THE PUBLIC RECORDS OF PALM BEACH COUNTY, FLORIDA.

SHEET 2 OF 4
DECEMBER, 1999

WEST BOCA SQUARE REPLAT
(PLAT BOOK 67, PAGES 141-143)

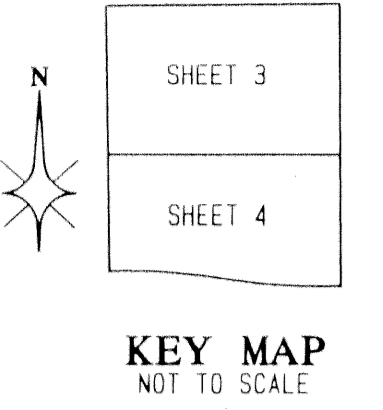
STATE ROAD No. 7 (U.S. 441)

STATE OF FLORIDA }
COUNTY OF PALM BEACH } SS

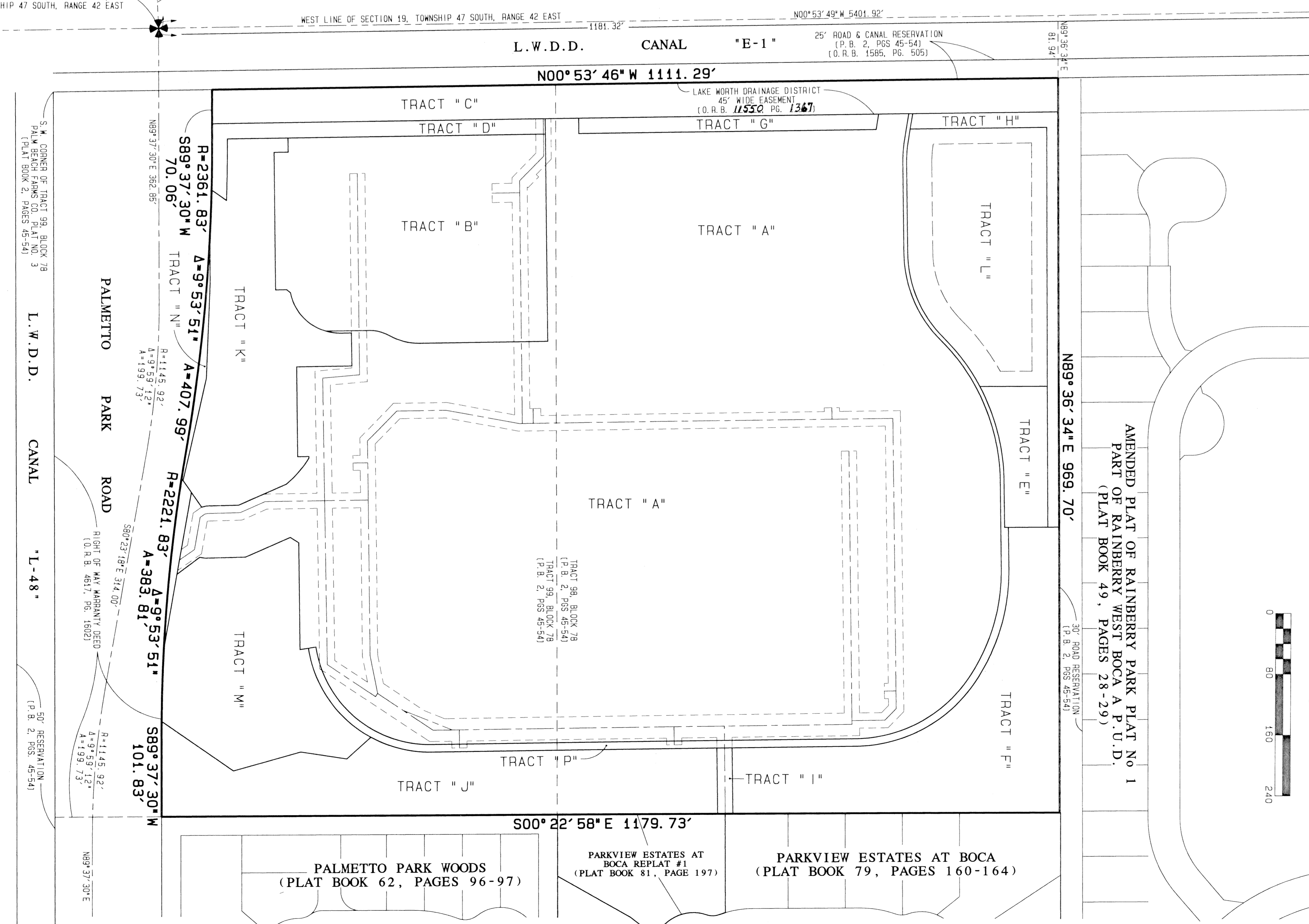
THIS PLAT WAS FILED FOR RECORD AT _____ DAY OF THIS _____ AD. AND DULY RECORDED IN PLAT BOOK _____ ON PAGES _____ AND _____

DOROTHY H. WILKEN, CLERK
CIRCUIT COURT

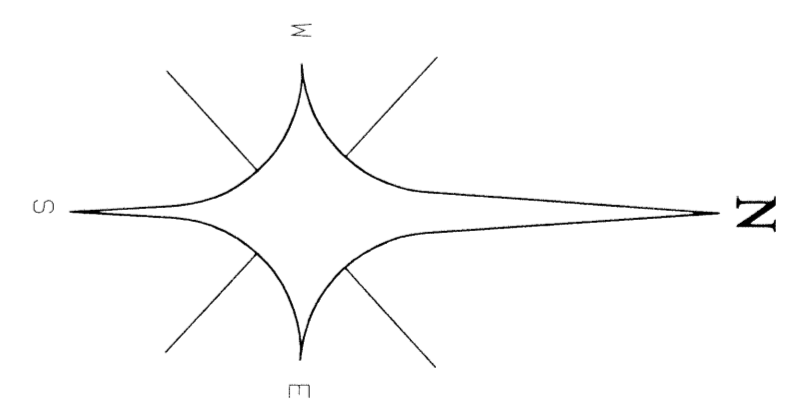
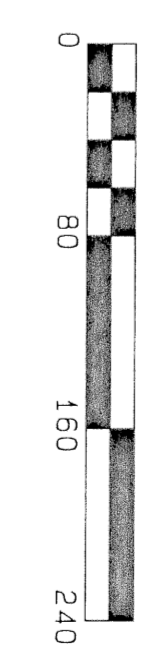
BY: _____ DC



POINT OF COMMENCEMENT
S.W. CORNER OF SECTION 19,
TOWNSHIP 47 SOUTH, RANGE 42 EAST



- LEGEND:**
- Δ = CENTRAL ANGLE/DELTA
 - = CENTERLINE
 - CH = CHORD
 - D.B. = DEED BOOK
 - D.E. = DRAINAGE EASEMENT
 - F.P. & L. = FLORIDA POWER AND LIGHT COMPANY
 - A = ARC LENGTH
 - L.A.E. = LIMITED ACCESS EASEMENT
 - L.M.A.E. = LAKE MAINTENANCE ACCESS EASEMENT
 - L.M.E. = LAKE MAINTENANCE EASEMENT
 - L.W.D. = LAKE WORTH DRAINAGE DISTRICT
 - N.R. = NON-RADIAL
 - N.T.S. = NOT TO SCALE
 - O.P.B. = OFFICIAL RECORDS BOOK
 - P.B. = PLAT BOOK
 - PG. = PAGE
 - P.O.B. = POINT OF BEGINNING
 - P.O.C. = POINT OF COMMENCEMENT
 - R = RADIUS (RADII)
 - R.F. = RADIAL TO FRONT LOT LINE
 - R.R. = RADIAL TO REAR LOT LINE
 - R/W = RIGHT OF WAY
 - U.E. = UTILITY EASEMENT
 - W.C. = WITNESS CORNER
 - Z.L.L.M.E. = ZERO LOT LINE MAINTENANCE EASEMENT
 - = PERMANENT CONTROL POINT (PCP) PCP LB4820
 - = PERMANENT REFERENCE MONUMENT (PRM) SET PRM LB4820



BLOCK 81
THE PALM BEACH FARMS Co.
PLAT No. 3
(PLAT BOOK 2, PAGES 45-54)

PROFESSIONAL SURVEYORS AND MAPPERS LB4820

ATLANTIC - CARIBBEAN MAPPING, INC.

3062 JOG ROAD - GREENACRES, FLORIDA 33467
(561) 964-7884 FAX (561) 964-1969